

BOARD UPDATE

PROSPER INDEPENDENT SCHOOL DISTRICT



JOYCE HALL ELEMENTARY SCHOOL (ES #15)

AS OF MARCH 2022

Site

- Main gas riser has been installed. Final connections and testing ongoing
- Irrigation installation ongoing
- Minor site grading ongoing

Building

- Storm shelter CMU demising wall is complete
- Shelter mezzanine slab has been poured
- Clerestory roof dry-in ongoing with window installation
- Joist installation ongoing – Area 1
- Metal stud framing – Areas 2 and 3
- Above ceiling MEP ongoing – Areas 2 and 3
- Roofing ongoing – Area 3
- Kitchen hood installation ongoing
- Masonry installation ongoing in the main entry corridor, cafetorium stage, and entry tower
- Tile flooring installation has begun

Aerial - Looking Northeast



BOARD UPDATE

PROSPER INDEPENDENT SCHOOL DISTRICT



JOYCE HALL ELEMENTARY SCHOOL (ES #15)

AS OF MARCH 2022

Aerial - Looking Northwest



Aerial - Looking Southeast



BOARD UPDATE

PROSPER INDEPENDENT SCHOOL DISTRICT



JOYCE HALL ELEMENTARY SCHOOL (ES #15)

AS OF MARCH 2022

Aerial - Looking Southwest



Main Entry Tower



BOARD UPDATE

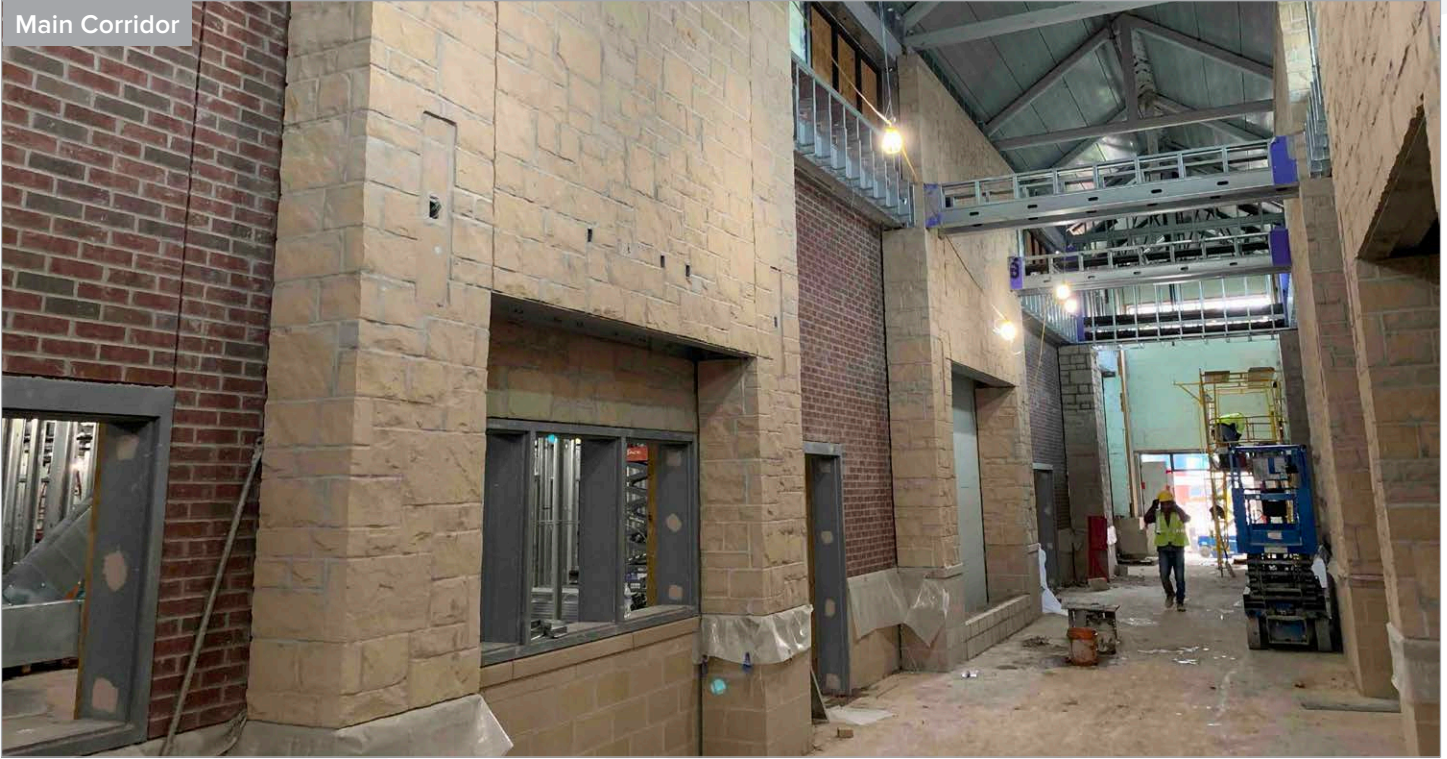
PROSPER INDEPENDENT SCHOOL DISTRICT



JOYCE HALL ELEMENTARY SCHOOL (ES #15)

AS OF MARCH 2022

Main Corridor



Administration Area



BOARD UPDATE

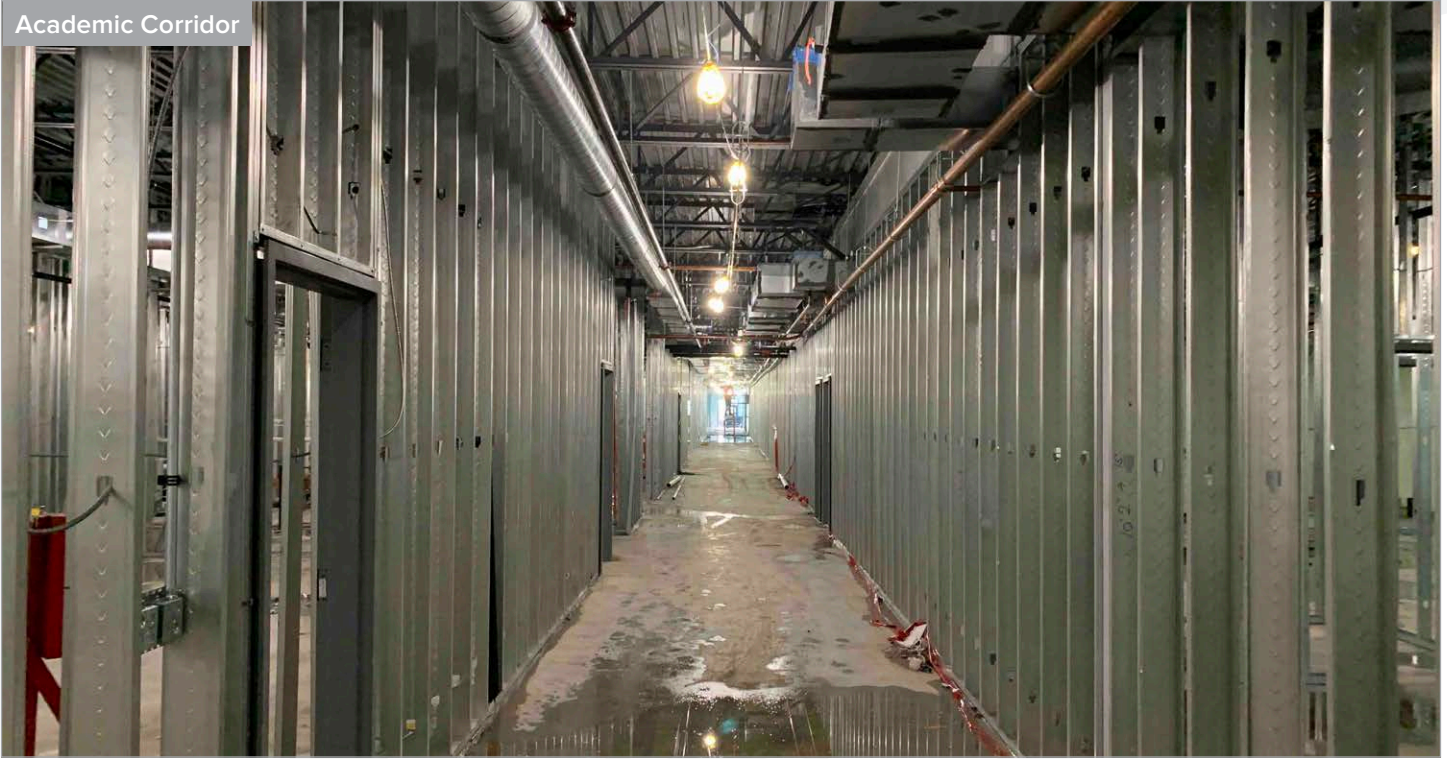
PROSPER INDEPENDENT SCHOOL DISTRICT



JOYCE HALL ELEMENTARY SCHOOL (ES #15)

AS OF MARCH 2022

Academic Corridor



Academic Wing



BOARD UPDATE

PROSPER INDEPENDENT SCHOOL DISTRICT



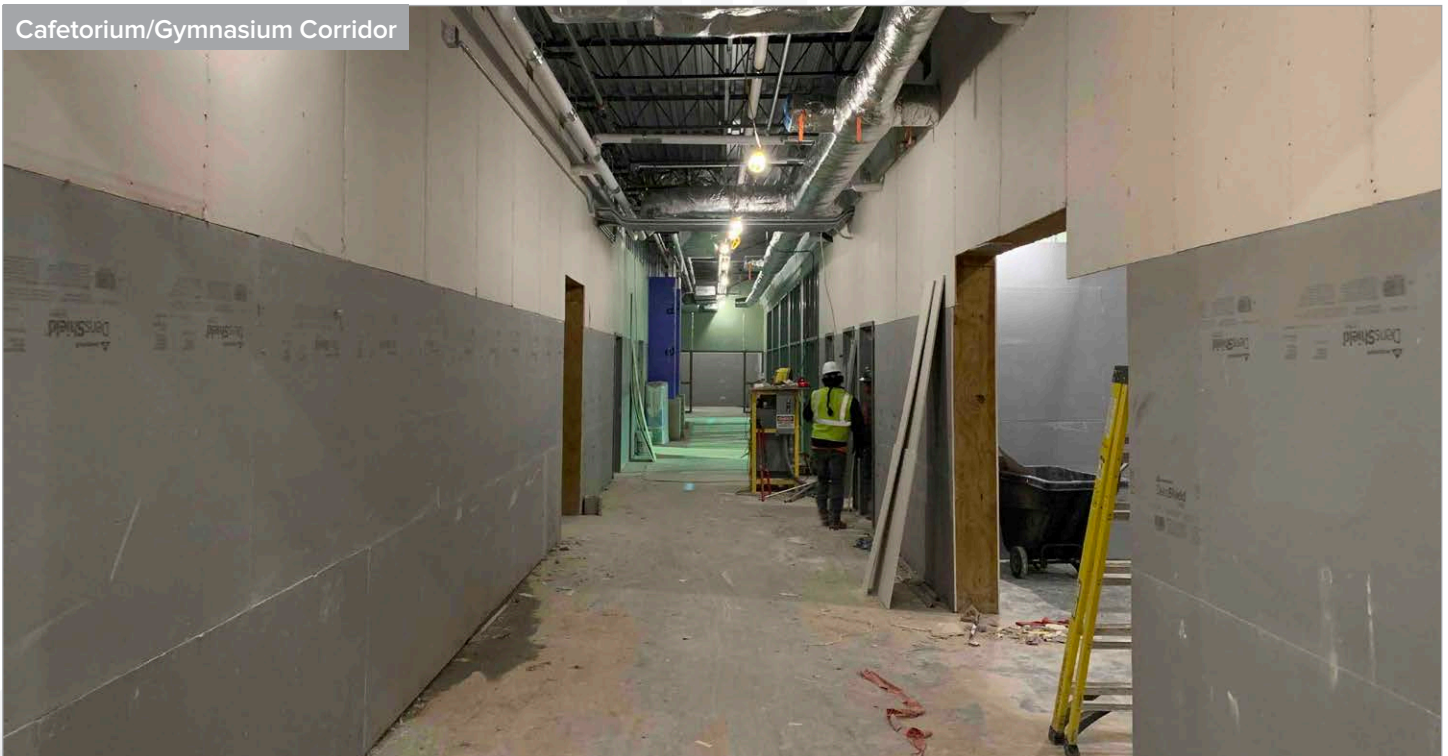
JOYCE HALL ELEMENTARY SCHOOL (ES #15)

AS OF MARCH 2022

Windows into Art Room



Cafetorium/Gymnasium Corridor



BOARD UPDATE

PROSPER INDEPENDENT SCHOOL DISTRICT



JOYCE HALL ELEMENTARY SCHOOL (ES #15)

AS OF MARCH 2022

Cafetorium



Gymnasium (Shelter)



BOARD UPDATE

PROSPER INDEPENDENT SCHOOL DISTRICT



JOYCE HALL ELEMENTARY SCHOOL (ES #15)

AS OF MARCH 2022

Rear Entry



Playground Area



BOARD UPDATE

PROSPER INDEPENDENT SCHOOL DISTRICT



JOYCE HALL ELEMENTARY SCHOOL (ES #15)

AS OF MARCH 2022

Exterior Masonry Progress



BOARD UPDATE

PROSPER INDEPENDENT SCHOOL DISTRICT



WALNUT GROVE HIGH SCHOOL (HS#3)

AS OF MARCH 2022

WORK COMPLETED AND ONGOING:

Site

- All parking lot paving on the project is complete
- Installation of backfill material at retaining wall B ongoing
- Installation of retaining walls at the baseball field ongoing
- Site grading for sidewalks ongoing
- Site light pole installation ongoing
- Main electrical conduit is complete to the transformers
- Detention pond retaining wall installation ongoing
- Installation of the headwall at the detention pond ongoing

Main Building

- Exterior sheathing installation ongoing – Area A
- MEP overhead rough-in ongoing – Area A
- Fireproofing patching ongoing on first floor – Area A
- Structural steel erection ongoing – Areas B and Q
- Structural steel erection beginning – Area C
- Structural steel delivering this month – Areas D and R
- Elevated slab complete – Area B
- Roof installation beginning – Area A
- Installation of hangers and supports for MEP ongoing – Area B
- CMU walls ongoing – Area P, Q and R
- Vertical construction has been approved for entire project by Town of Prosper
- Fire sprinkler permit has been approved

Multipurpose Facility (MPF) and Ancillary Buildings

- Slab for batting cages placed
- Pre-engineered metal building for MPF to be delivered this month

Aerial - Looking Northeast



BOARD UPDATE

PROSPER INDEPENDENT SCHOOL DISTRICT



WALNUT GROVE HIGH SCHOOL (HS#3)

AS OF MARCH 2022

Aerial - Looking Northwest



Aerial - Looking Southeast



BOARD UPDATE

PROSPER INDEPENDENT SCHOOL DISTRICT



WALNUT GROVE HIGH SCHOOL (HS#3)

AS OF MARCH 2022

Aerial - Looking Southwest



Auditorium Entry



BOARD UPDATE

PROSPER INDEPENDENT SCHOOL DISTRICT



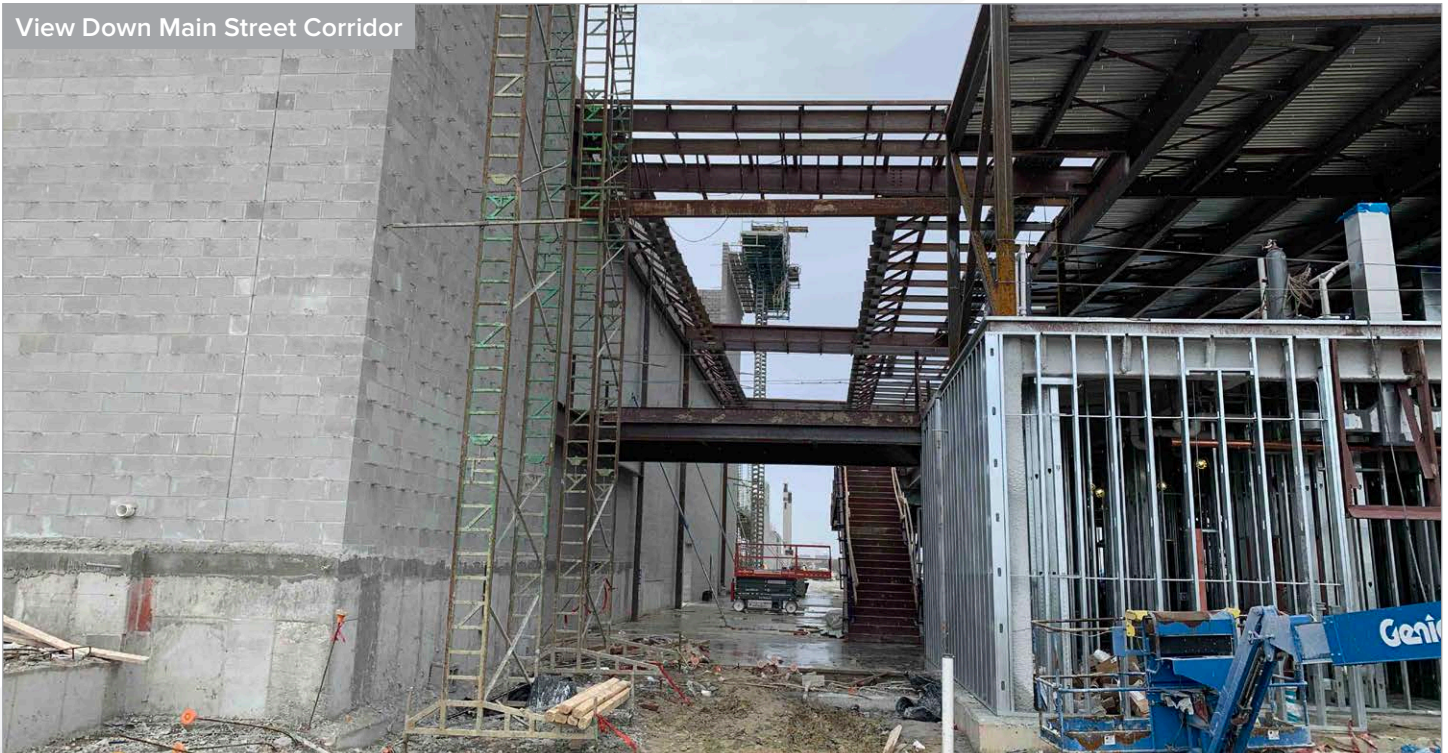
WALNUT GROVE HIGH SCHOOL (HS#3)

AS OF MARCH 2022

Auditorium Interior



View Down Main Street Corridor



BOARD UPDATE

PROSPER INDEPENDENT SCHOOL DISTRICT



WALNUT GROVE HIGH SCHOOL (HS#3)

AS OF MARCH 2022

Exterior Sheathing Installation



Band Hall (Auditorium Beyond)



BOARD UPDATE

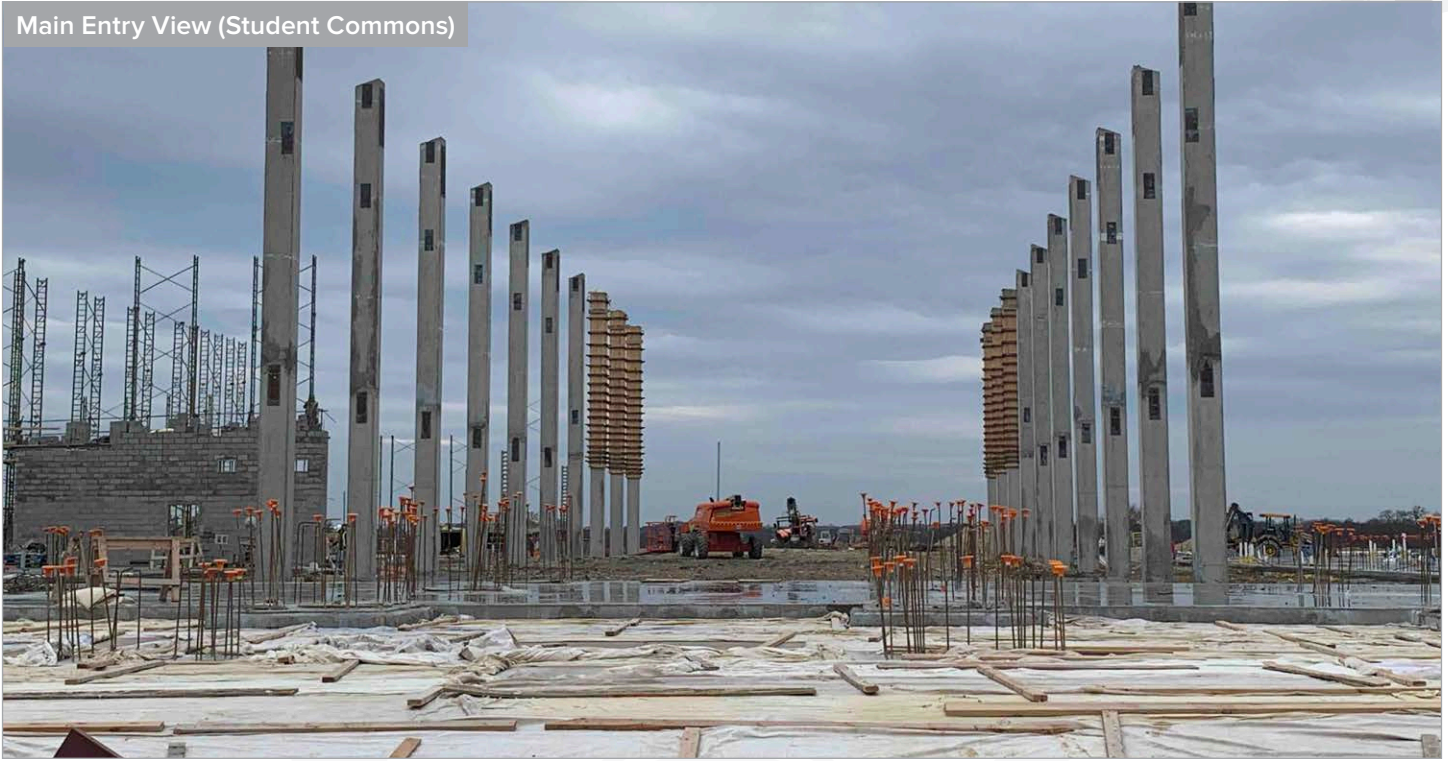
PROSPER INDEPENDENT SCHOOL DISTRICT



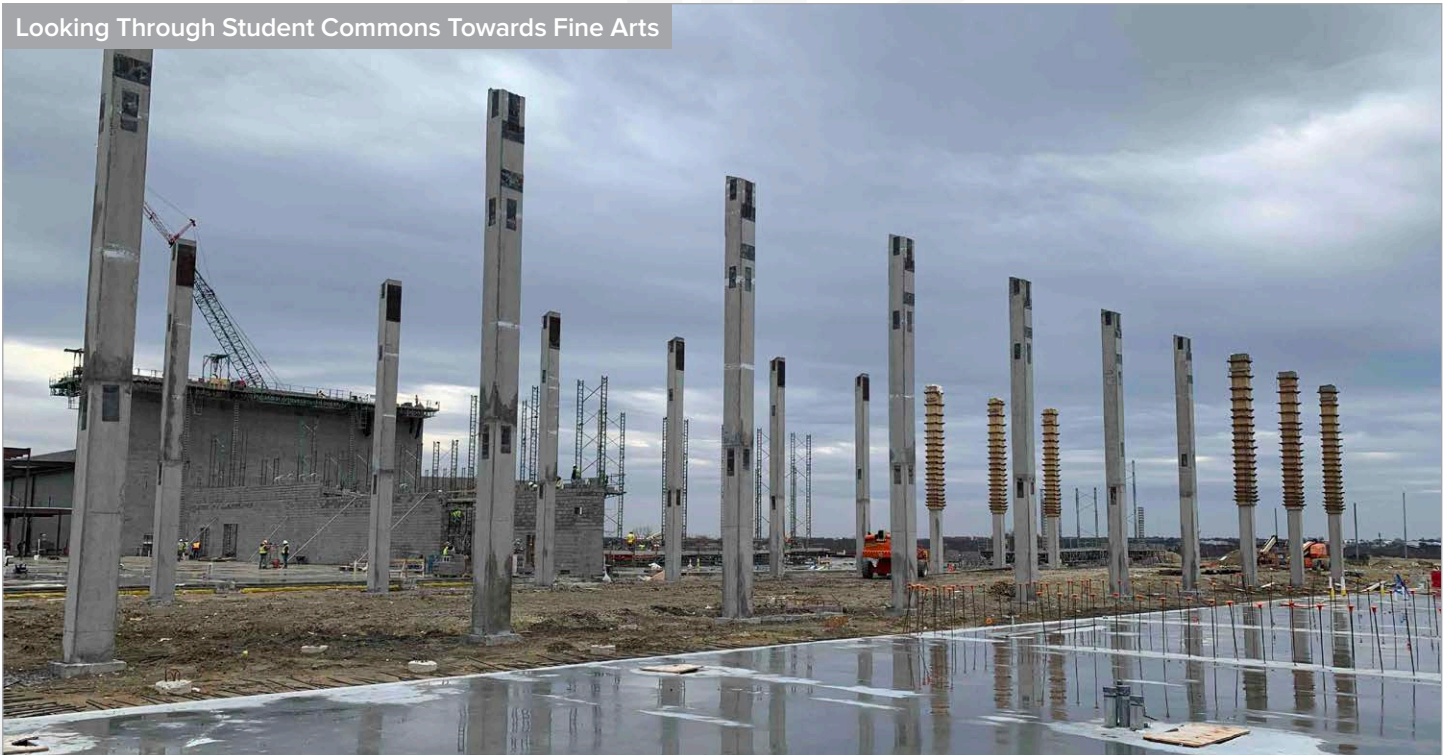
WALNUT GROVE HIGH SCHOOL (HS#3)

AS OF MARCH 2022

Main Entry View (Student Commons)



Looking Through Student Commons Towards Fine Arts



BOARD UPDATE

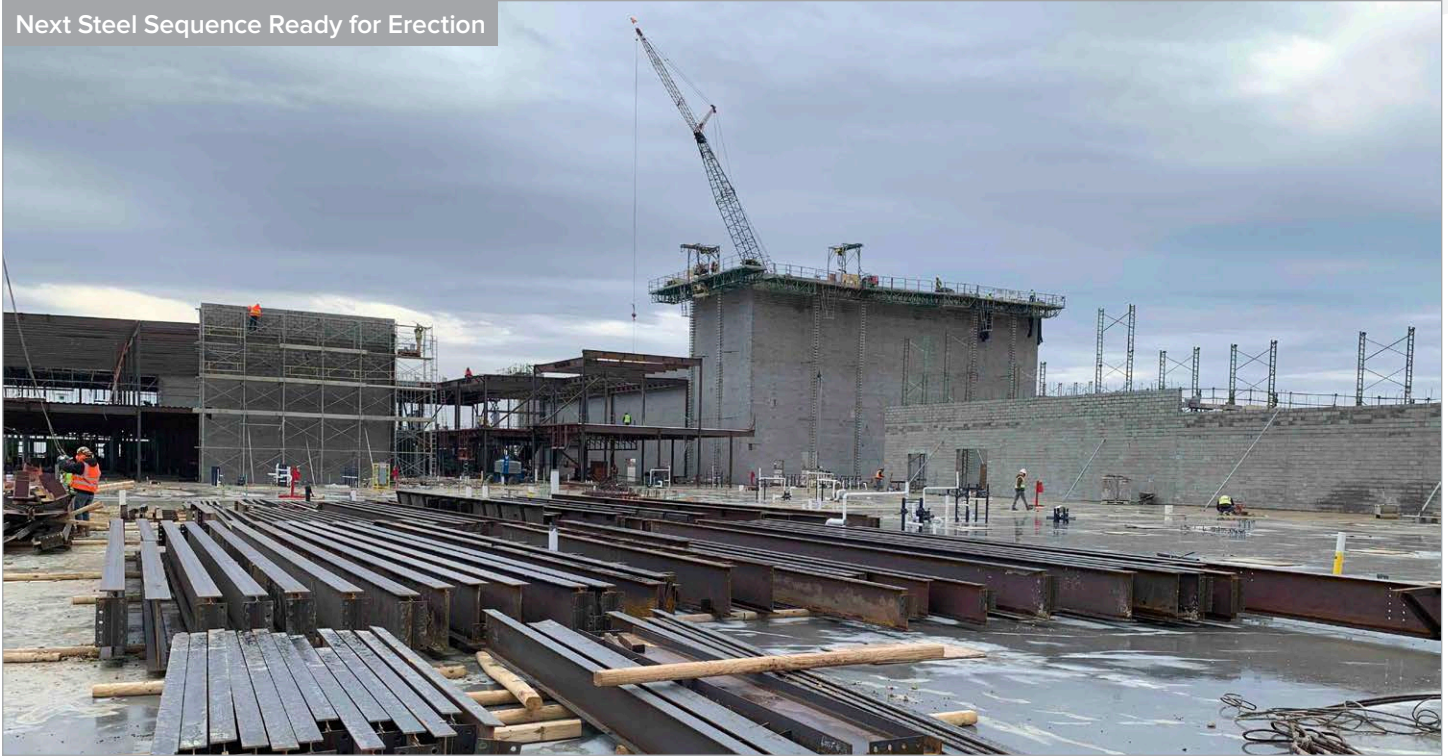
PROSPER INDEPENDENT SCHOOL DISTRICT



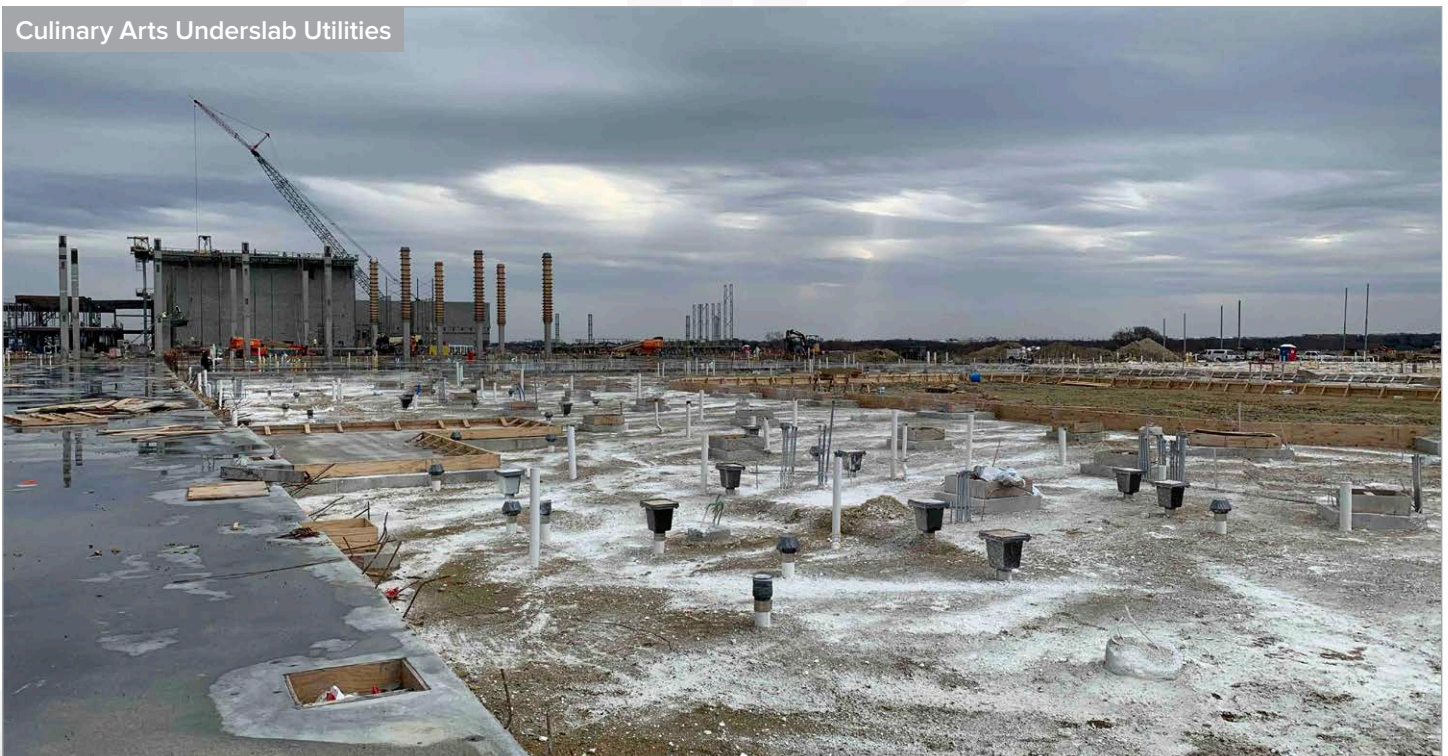
WALNUT GROVE HIGH SCHOOL (HS#3)

AS OF MARCH 2022

Next Steel Sequence Ready for Erection



Culinary Arts Underslab Utilities



BOARD UPDATE

PROSPER INDEPENDENT SCHOOL DISTRICT



WALNUT GROVE HIGH SCHOOL (HS#3)

AS OF MARCH 2022

Multipurpose Facility (MPF)



Baseball Field Retaining Wall (Right Field)



BOARD UPDATE

PROSPER INDEPENDENT SCHOOL DISTRICT



WALNUT GROVE HIGH SCHOOL (HS#3)

AS OF MARCH 2022

Softball Field Backstop Netting Poles

